



LUCECO  plc

Project References



Kingfisher
Lighting





Regional Projects Segment Spread



- Schools & Universities
- Car Showrooms
- Hotels
- Residential Buildings
- Commercial Buildings
- Super/Hyper Markets
- Shopping Malls
- Industries

- Banks
- Warehouses
- Ministry Buildings
- Military establishments
- Medical Clinics
- Diplomatic buildings
- Car & Horse Racing Venues
- Airports



UNITED ARAB EMIRATES



- Dubai Health Authority Clinic, **UAE.**
- Secondary Technical School, **UAE.**
- Multipurpose Workshop for HH Sheikh Hamdan (Crown Prince of Dubai), **UAE.**
- LuLu Hyper Market, **UAE.**
- Saadiyat Island beach Villas, **UAE.**
- Private Villa in Palm Jumeriah, **UAE.**
- Al Etihad School in Jumeriah, **UAE.**
- Jumbo Electronics, **UAE**
- The Address Boulevard Hotel, **UAE**
- Ford Showroom, **UAE**
- Hashemite University, **Jordan.**
- Pioneer Cement, **UAE.**
- Emirates Transport Light Duty Drivingtraining centre, **UAE.**
- Dabur International, **UAE.**
- Dubai Properties Office, **UAE.**
- Lucy Switchgear Office, **UAE.**
- Kromberg & Schubert, **UAE.**
- The Address Matrix Hotel, **UAE.**
- Mazen Factory, **UAE.**
- Jumbo Rashidiya Warehouse, **UAE.**
- Meydan, **UAE.**
- Ministry of Foreign Affairs (MOFA), **UAE.**
- HPBS Office Building, **UAE.**
- Emirates Transport Building, **UAE.**



Jumbo Electronics, UAE



UNITED ARAB EMIRATES



- Atlas Medical Center, **UAE.**
- Dubai Police Headquarters, **UAE.**
- Beach Palace, **UAE.**
- Central Mall, Khalifa City, **UAE.**
- Dubai Racing Club, **UAE.**
- Sheik Khalifa Energy Complex, **UAE.**
- Jaguar Showroom, **UAE.**
- Abu Dhabi Navy School, **UAE.**
- DHP Residence Tower in Silicon Oasis, **UAE.**
- Seville Chocolate Factory, **UAE.**
- Sharjah Ladies Club, **UAE.**
- Soldiers Camp at Hatta, **UAE**
- Amity School, **UAE.**
- Copthorne Hotel, **UAE.**
- Hassasah Mosque, **UAE.**
- Al Ain Mosque, **UAE.**
- Khansaheb's office, **UAE.**
- Al Barrari luxury villas, **UAE.**
- Dubai Endurance City, **UAE.**
- Prime Minister's office at Emirates Towers, **UAE.**
- Rotopak, **UAE.**
- Ortus Hospital, **UAE.**
- City Hotels, **UAE.**
- Jumbo Rashidiya Warehouse, **UAE.**
- AADC Substation, **UAE.**
- Fairmont Hotel, **UAE.**



Barsha Community Center, Dubai, UAE



UNITED ARAB EMIRATES



- DU Data Centre, **UAE.**
- MB Consultancy office, **UAE.**
- Manipal University, **UAE.**
- Cadillac car showroom, **UAE.**
- Spinneys super market, **UAE.**
- The School of Research & Science, **UAE.**
- ADNOC Office, **UAE.**
- AMANA Office, **UAE.**
- ADDC Office, **UAE.**
- E-construct Office, **UAE.**
- Makeen Properties, **UAE.**
- IMPZ Hotel, **UAE.**
- Sky View, **UAE.**
- Dubai Civil Defence Stations, **UAE**

- AADC Substation, **UAE.**
- Medcare Hospital, **UAE.**
- AFP News agency office, **UAE.**
- Dubai Police store, **UAE.**
- Hilton Hotel, **UAE.**
- Capital Hospital, **UAE.**
- Atlas Pharmacy, **UAE.**
- Dubai Civil Defence Stations, **UAE.**
- MB Consultancy office, **UAE.**
- Manipal University, **UAE.**
- Recreation golf area , ADNOC, **UAE.**
- Falcon Warehouse, Nad Alshiba, **UAE.**
- Al Marai Dairy, **UAE.**

Gargash Hospital, Dubai, UAE.





- Al-Jazira Sports & Cultural Club, **UAE.**
- Bently Showroom, **UAE.**
- Dubai Municipality Car Parking Building, Dubai, **UAE.**
- Mubarak Transport, **UAE.**
- Rise Tower, **UAE.**
- Four Seasons Resort, **UAE.**
- Mitsubishi Showroom, **UAE.**
- Silicon Oasis Building, Dubai, **UAE.**
- Rixos Hotel, Saadiyat Island, **UAE.**
- DIFC – Gate avenue, Dubai, **UAE.**
- Burjeel Hospital, Sharjah, **UAE.**
- Tunnel Work at Nad Al Shiba, Meydan, **UAE.**
- Lake Stone Consultant Office Building, **UAE.**
- DM Office Building, Warsn, **UAE.**
- Marina Hotel, Dubai, **UAE.**
- AG Facility, Dubai, **UAE.**
- Emirates Identity Authority, Dubai, **UAE.**
- AZIZI residential building, Dubai, **UAE.**
- Coca Cola, Al Ain, **UAE.**
- Royal Workshop for Gargash, Dubai, **UAE.**
- GEMS Metropole School, Wadi Al Safa, Dubai, **UAE.**
- Dewa Staff accommodation building, Dubai, **UAE.**
- Al Safra Villas, Dubai, **UAE.**
- Fountain View Tower Creek, Dubai, **UAE.**
- Car Wash building, Dubai police HQ, Dubai, **UAE.**
- G+4 Labour camp, MNGC, Dubai, **UAE.**
- District cooling plant, Nakheel, Dubai, **UAE.**

Al Jazira Club, Abu Dhabi, UAE.



UNITED ARAB EMIRATES



- Sheikh Rashid Housing Est; 397 Villas, Dubai, **UAE.**
- G+8 Al Sheirah Building, Fujairah, **UAE.**
- Gargash Hospital, Dubai, **UAE.**
- Wadi tower city of arabia, Dubailand, Dubai, **UAE.**
- Dubai Municipality Fruit & Vegetable market Phase III, Al warsan, Dubai, **UAE.**
- Ford Showroom, Sheikh Zayed road, Dubai, **UAE.**
- DEWA G+6 Building at Al warqa, Dubai, **UAE.**
- Ocean Gate Container Terminal, Khalifa Port, **UAE.**
- DEWA G+6 Building at Al Awir, Dubai, **UAE.**
- InterContinental Tobacco Company, Dubai, **UAE.**
- Corys Plastic Industry, Abu Dhabi, **UAE.**
- Imperial Club Lounge, Dubai, **UAE.**
- Al Reem central park, Abu Dhabi, **UAE.**
- Al Ameen School, Abu Dhabi, **UAE.**
- Ruroyal Restaurant, Dubai, **UAE.**
- Shoba Façade works warehouse, Sharjah, **UAE.**
- DB Schenker, Dubai, **UAE.**
- Marina Mall food court, Dubai, **UAE.**
- Premier Inn Hotels, Dubai, **UAE.**
- Dubai Municipality Audit Building, Dubai, **UAE.**
- Mohammed Bin Rashid Library, Dubai, **UAE.**



Central Mall, UAE



UNITED ARAB EMIRATES



- Home Center, Jebel Ali, Dubai, **UAE.**
- Baby Shop, DWC, Dubai, **UAE.**
- Etjar Warehouse, Dubai, **UAE.**
- Sheikh Mohammed Bin Rashid Library, Dubai, **UAE.**
- Tahnoon School, Abu Dhabi, **UAE.**
- Kerry Logistics, Dubai, **UAE.**
- Ocean Oil Fields, Dubai, **UAE.**
- Saif Zone HQ, Sharjah, **UAE.**
- TUV – SUD, Training facility, Abu Dhabi, **UAE.**
- 27 Storey Building for Meydan, Dubai, **UAE.**
- DM - Al Barsha community centre, Dubai, **UAE.**
- Big Box II, Dubai, **UAE.**
- Bloom Towers, Dubai, **UAE.**
- Khorfakkan Indoor stadium, DPW Sharjah, **UAE.**
- Arab Marine Academy, Khorfakkan, **UAE.**
- Al Saad Indian School, Al Ain, **UAE.**
- Autism Center, Al Ain, **UAE.**
- Ain Al Fayda School, Al Ain, **UAE.**
- Pearl Wisdom School, Dubai, **UAE.**
- Integra Cements, RAK, **UAE.**
- Helios Perfume factory, RAK, **UAE.**
- New Union RTA Bus station, Dubai, **UAE.**
- New Al Ghubaiba RTA Bus station, Dubai, **UAE.**
- New Al Kifaf RTA Bus station, Dubai, **UAE.**
- New Silicon Oasis RTA Bus station, Dubai, **UAE.**



Amity School, Dubai, UAE.





- New Business Bay RTA Bus station, Dubai, **UAE.**
- New Al Quasis RTA Bus station, Dubai, **UAE.**
- Jebel Ali EROS Warehouse, Dubai, **UAE.**
- Al Tayer Group Automobile Garage, Dubai, **UAE.**
- EZ Wellness centre, Ajman, **UAE.**
- Abu Dhabi Future School Program – Phase 8, Abu Dhabi, **UAE.**
- G+5 Student accommodation block @ Academic city, Dubai, **UAE.**
- Media Zone Authority Building, Abu Dhabi, **UAE.**
- Umm Al Thoub Labour Accommodation, Umm Al Quwain, **UAE.**
- Office Building for Directorate of Economic Development Western region, Abu Dhabi, **UAE.**
- Motherson PKC Harness Systems, Ras Al Khaimah, **UAE.**
- Al Dhaid Sports Club, MOID, Sharjah, **UAE.**
- Rem Raam Mosque, Dubai, **UAE.**
- Sea Prince Warehouse, Dubai, **UAE.**
- DM Fruit & Vegetable Market Street Lighting, Dubai, **UAE.**
- G+7 Gargash Tower, Nad Al Hamar, Dubai, **UAE.**
- Fabrication Shed at Layyah Plant, Sharjah, **UAE.**
- Humaid Mubarak Razaz Al Monsoori Building (ADCE), Abu Dhabi, **UAE.**

Khorfakkan Sports & Cultural Club, UAE.





- Emirates Poultry Farm, Al Dhaid, Sharjah, **UAE.**
- Executive office of HH Sheikha - Department of Public Works, Sharjah, **UAE.**
- Dubai Municipality Fruit & Vegetable market, Al warsan, Dubai, **UAE.**
- Nautilus Technical Facilities for DU Telecom, Dubai, **UAE.**
- Décor Centre, Command of Military Works, Sharjah, **UAE.**
- Homebox Warehouse, LMG, DWC, Dubai, **UAE.**
- Bio Diesel Fuel factory, Jafza South, Dubai, **UAE.**
- Residential Building at Dubai Creek Harbour - Plot No.A030, Dubai, **UAE.**
- Jumeriah Hotel Apartment, Dubai, **UAE.**
- Fatmah Mohamed Sharif 2B+G+4+R Residential Tower @ JVT, Dubai, **UAE.**
- District Cooling Plant for EMPOWER @ IMPZ, Dubai, **UAE.**
- Splash Warehouse, LMG, DWC, Dubai, **UAE.**
- Parking Building for New Dubai Prosecution Building, Dubai, **UAE.**
- Abu Dhabi Lower Court, Abu Dhabi, **UAE.**
- Aesha & Fatima Al Zaabi Residential Bldg., - ADCE, Abu Dhabi, **UAE**
- Al Hikma School, Al Talla, Ajman, **UAE**
- Jumeirah Living Phase I & II, Dubai, **UAE**
- Shopping Mall G+1 & G+5, Souq Al Kabeer, Dubai, **UAE**
- Fresh and Vegetables Market - CPC 1,2,3,4 & Street Light, **UAE**

DM F&V Market Customer Centre, UAE.



UNITED ARAB EMIRATES



- Arab Marine Academy, Khorfakkan, **UAE.**
- Forensic Building, Sharjah DPW, **UAE.**
- Private School at Tawi Hemedah, Maliha, Sharjah DPW, **UAE.**
- Sharjah Waste to Energy Plant (CNIM), Sharjah, **UAE**
- Residential Bldg., for Abdullah Saif Al Neumi-ADCE, Abu Dhabi, **UAE**
- Dubai Drydocks, **Dubai, UAE**
- Streit Security Vehicle FZE, **RAK, UAE**
- AMEF Headquarters, Dubai, **UAE**
- VIDA Mall, Dubai, **UAE**
- UAE University, Al Ain, **UAE**
- MBK Marine Industry, Abu Dhabi, **UAE**
- G+12 Residential Bldg., (Adnan Saffarini Consultants) Satwa, Dubai, **UAE**
- Streit Securities Package 2 – RAK, **UAE**
- YAS Acres Golf Club, Abu Dhabi, **UAE**
- EREC – Emirates Authority for Standardization & Metrology, Dubai, **UAE**
- Dubai London Hospital, Dubai, **UAE**
- G+2P+5+Roof Building for New Dubai Prosecution, Dubai, **UAE.**
- Abu Dhabi Courts Complex, Abu Dhabi, **UAE**
- District Cooling Plant, Jumeirah, Dubai, **UAE**
- G+19 Residential Tower, Mankhool, Dubai, **UAE**
- Al Suhub Rest House (Khatib & Alami Consultants), Khorfakkan, **UAE**
- Al Dhafra Wall Project, Abu Dhabi, **UAE**
- BOH, Dibba Hotel, Fujairah, **UAE**
- Kalba Tower, Sharjah, **UAE**

Dubai New Prosecution Building, UAE





- Construction of new warehouse in freezone & non freezone area, RAK, **UAE**
- Arrival Area Improvement – Presidential Flight, Abu Dhabi, **UAE**
- Kalba Tower, Sharjah, **UAE**
- Homebox In-Racks, DWC Warehouse, Dubai, **UAE**
- CNIM - Street Lighting, Sharjah, **UAE**
- DEWA Jebel Ali Warehouse, Dubai, **UAE**
- Beit Al Khier Society G+12 Residential Building, Dubai, **UAE**
- DEWA Substation, Dubai, **UAE**
- Command Military Works, Abu Dhabi, **UAE**
- DPW – Dhahid Club, **UAE**
- Central Bank of UAE, Abu Dhabi, **UAE**
- Presidential Palace Basement (MOPA) Phase 1, Abu Dhabi, **UAE**
- Zeicef School, Dubai, **UAE**
- Omega DC Warehouse In-racks – Landmark Group, Dubai, **UAE**
- Arab Marine Academy, Sharjah, **UAE**
- American Embassy Expansion, Abu Dhabi, **UAE**
- DEWA Substation Package 2, Dubai, **UAE**
- ADNOC Fuel Station, Al Ain & Gharoob, **UAE**
- Russian School, Abu Dhabi Island, **UAE**
- Victoria School Kalba & Dhaid, Sharjah DPW, Sharjah, **UAE**
- Rakez Warehouses - Phase 2, Ras Al Khaimah, **UAE**
- Rest House III, Al Marfaq, Abu Dhabi, **UAE**

RTA Bus Station, Dubai, UAE



Abdul Razzak Al-Basir School, Kuwait





- UAE University – Refurbishment in A,B,D,E,F1,G and H Series Buildings, Al Ain, **UAE**
- Emarat Fuel Pump Refurbishment, Dubai **UAE**
- Dubai Municipality Parks, Dubai, **UAE**
- National Archives, Abu Dhabi, **UAE**
- Lavie, Dubai, **UAE**
- G+2+R Labour Accommodation, Muhaisnah 2 for M/S Islamic Affairs & Charitable Activities Department, Dubai, **UAE**
- 30 MIG Hatta Reservoir, Hatta, **UAE**
- Dubai Municipality, Rising School, Dubai **UAE**
- Zayed Al Thani School Refurbishment, Abu Dhabi, **UAE**
- Presidential Palace Basement (MOPA) Phase 1, Abu Dhabi, **UAE**
- Sewerage Treatment Plant, Sharjah, **UAE**
- Dubai Commerce City, Dubai, **UAE**
- Pedestrian Area – PNP 613A, Sharjah Airport, Sharjah, **UAE**
- Mr. Musallam Dafoos Muhammed Salham Mazroui Residential Tower, Abu Dhabi, **UAE**
- DEWA Substation, Dubai, **UAE**
- Baniyas Shopping Centre BOH, External & Façade Package, Abu Dhabi, **UAE**
- Dubai Air Wing Hanger Area, Dubai International Airport, Dubai, **UAE**
- WAQIF Shopping Centre, Abu Dhabi, **UAE**
- Hudayriat Substation, Abu Dhabi, **UAE**

Emirates – Waste to Energy Plant, Sharjah, UAE



UNITED ARAB EMIRATES



- G+1 Villa for ARM Holding, Dubai, **UAE**
- JLR, Ford, Lincoln Showroom & Service Centre, Al Ain, **UAE**
- Sunreef Yachts Production Shed and Accommodation, RAK, **UAE**
- GMG Foods Warehouse, Dubai, **UAE**
- 5 Star Hotel & Hotel Apartment, RAK, **UAE**
- Baniyas Select Supermarket, Abu Dhabi, **UAE**
- Alpha Nero Office, Factory & Warehouse, Dubai, **UAE**
- Dubai Dry Docks, Dubai, **UAE**
- Awafi RAK School, RAK, **UAE**
- Seeh RAK School, RAK, **UAE**
- Dibba Fujairah School, Fujairah, **UAE**
- Bidia Fujairah School, Fujairah, **UAE**
- MBZ Fujairah School, Fujairah, **UAE**
- Packaging & Filling Building-Coca Cola Plant, Al Ain, **UAE**
- Royal Technologies Solutions – Silk Manufacturing Factory & Labour Accommodation @ Zayed Military City, Abu Dhabi, **UAE**
- ADNEC Residence Building, Abu Dhabi, **UAE**
- (41-LC-2023): Replacement of internal light fixtures to LED lights in site wide buildings of UAE University, Al Ain, **UAE**
- Zayed National Museum, Abu Dhabi, **UAE**
- Masa Warehouse, G+M Office, Guard Room, Service Block, Water Tank, Holding Tank, Compound Wall & Fence, Dubai, **UAE**
- Masdar Office, Abu Dhabi, **UAE**

Amity School, Dubai, UAE.





UNITED ARAB EMIRATES



- Masdar Office, Abu Dhabi, **UAE**
- Padel Court, Abu Dhabi, **UAE**
- Marbella Villas, Phase II for RAK properties, RAK, **UAE**
- Khalifa Bin Zayed Al Awal KG School, Abu Dhabi, **UAE**
- Adio School, Abu Dhabi, **UAE**
- Simulators Complex at Sharjah Maritime Academy, Khorfakkan, Sharjah, **UAE**
- DEWA Substation, Dubai, **UAE**
- 20 G+M Warehouses for DEIZ Light Industrial Unit, Dubai, **UAE**
- DM Labours Market, Al Quoz, Dubai, **UAE**
- Additional Sunreef Yachts Production Shed and Accommodation, RAK, **UAE**
- Senaat DEWA Substation, Dubai, **UAE**
- Dubai Dry Docks, Blasting Shed, Dubai, **UAE**
- Development of Detainees Bldg., Abu Dhabi, **UAE**
- AD Indoor Padel Club, Abu Dhabi, **UAE**
- Westin 5 Star Hotel – Façade Lighting, RAK, **UAE**
- Al Ain Municipality Auditorium, Al Ain, **UAE**
- Vocational Training Center & Auxiliary Building, Abu Dhabi, **UAE**
- RAKEZ Warehouse 16 & 17, RAK, **UAE**
- Office and Manufacturing Facility at Al Yamuna Denson Industries, RAK, **UAE**
- Containerized Office for Staging & Facilities Dept. - Dubai Dry Docks, Dubai, **UAE**
- Al Yamuna Densons FZE, RAK, **UAE**

Presidential Flight Terminal, Abu Dhabi, UAE





UNITED ARAB EMIRATES



- Empower District Colling Plant @ Jumeirah Beach Hotel District, Dubai, **UAE**
- DEWA Substation, Dubai, **UAE**
- External & Landscape light supply for Judicial Controlling Building, AUH, **UAE**
- Internal light supply for Judicial Controlling Building, AUH, **UAE**
- VOPAK Horizons, Fujairah, **UAE**
- Royal Airwing Paint Both, Dubai, **UAE**
- Command of Military Works, AUH, **UAE**
- UAE University Life Cycle Projects, Al Ain, **UAE**
- Saadiyat Luxury Residential Project, AUH, **UAE**
- DAS Island Residential Dev't Package-1, DAS Island, AUH, **UAE**
- DEWA N17720 KIZAD 13233 KVA Substation, **UAE**
- Rakez 240 Warehouse, RAK, **UAE**
- DCP Jumeirah Beach Residences, Dubai, **UAE**
- Samer Villa, Abu Dhabi, **UAE**
- American Community School, Abu Dhabi, **UAE**
- DHP Residences DSO, Dubai, **UAE**
- Al Ain Hospital Car Park, Al Ain, **UAE**
- Saadiyat Island Package 2, Abu Dhabi, **UAE**

Streit Security Vehicle Plant in RAK, UAE



OMAN



- American Spine Center, **Oman**.
- Ghala Medical Centre, **Oman**.
- Misfah Central Warehouse, **Oman**.
- Bahwan Sohar Showroom, **Oman**.
- Private Villa at SUR, **Oman**.
- Sultan Qaboos University, **Oman**.
- Singapore Consulate, **Oman**.
- Ocean Mall, **Oman**.
- Al Asriyah Marble Factory, **Oman**.
- Al Hajar Sub Station, **Oman**.
- Sheraton Ruwi, **Oman**.
- Bahwan Mart, Ruwi, **Oman**.
- Ministry of Interior office, **Oman**.
- Bank Muscat, **Oman**.
- Imaging Laboratory, **Oman**.
- Panorama Mall, **Oman**.

- Bahwan Electronics Showroom, **Oman**.
- Royal Oman Police HQ, Ibra, **Oman**.
- Liwa Residential Project for Ministry of Housing, **Oman**.
- Regional Detention Centre (DTC) for Royal Oman Police (ROP), **Oman**.
- Police Station at Mahadha for ROP, **Oman**.
- Police Station at Saham for ROP, **Oman**.
- Police station at Rass Al Hadd, **Oman**.
- Detention Centre Ibra (ROP), **Oman**.
- Haima Police Station, **Oman**.
- Extension of Forensic Lab (ROP), **Oman**.
- Ibra Commercial and Residential Project, **Oman**.



Ministry of Interiors, VVIP Hall, Oman



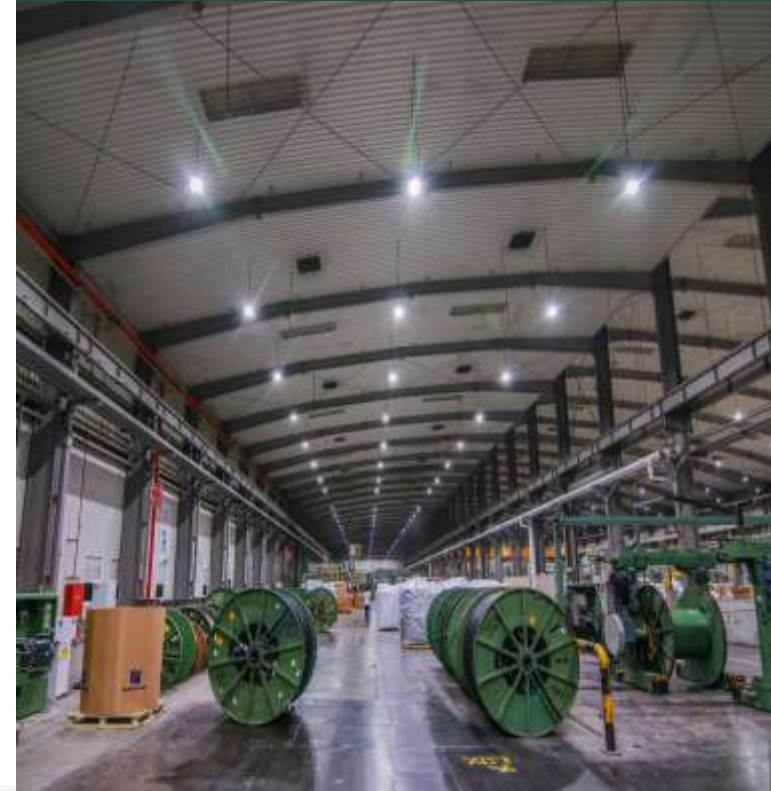
OMAN



- Sur Mosque, **Oman**.
- Oman Cable Industry, **Oman**.
- Police Complex at Saninah, **Oman**.
- Additional Buildings Phase-1 at SQAPS Nizwa, **Oman**.
- Police Complex at Sumail, **Oman**.
- Police Complex at Sahma, **Oman**.
- Sohar Flour Mills, **Oman**.
- ROP Complex at Quriyat, **Oman**.
- Azaiba Police Complex, ROP, **Oman**.
- Police Complex, Mokshan, **Oman**.
- ROP complex, Nizwa, **Oman**.
- Training school, Nizwa, **Oman**.
- ONEIC Training Institute, Al Misfah, **Oman**.

- Al Adrak-Commercial Building, Bausher, **Oman**.
- A Saffa Foods SAOG Logistic Warehouse Raysut, **Oman**.
- School of Music Nizwa, ROP, **Oman**.
- Traffic Institute 2 at Haima, ROP, **Oman**.
- ROP Additional Building Phase 1, Nizwa, **Oman**.
- Nizwa ROP - 5 School of Music & Accommodation, **Oman**.
- Additional Buildings Phase-1 At SQAPS Nizwa, **Oman**.
- Naval base, Wudam, **Oman**.
- Namma Poultry Farm, **Oman**.
- Medical Supply Center - Al Khoud (MOD), **Oman**.

Oman Cables, Oman.



OMAN



- Raysut Water Reclamation Plant Ph I, **Oman**
- Khimji Warehouse, Muscat, **Oman.**
- One World International School, Muscat, **Oman.**
- Nizwa Academy- Package 01, ROP, **Oman.**
- VAF Complex for Royal Oman Police, **Oman.**
- Nizwa Academy- Package 02, ROP, **Oman.**
- Nizwa Academy- Package 03, ROP, **Oman.**
- Enhance Group Warehouse, Sohar-Ruwais- Warqa, **Oman.**
- RCA Seeb Office Building, Muscat, **Oman.**
- National Pharmaceutical Industries Co., Rusayl, **Oman**
- Residential Block, Police College ROP, Nizwa, **Oman**
- MOD Bidya Camp, **Oman.**
- Royal Oman Police Training Institute Package 3, **Oman.**
- Royal Court Affairs Chinese Clinic, **Oman**
- Zawaya Surgical Hospital, Muscat, **Oman**
- MOD Frontier Camp Package 3, **Oman**
- Oman Cable Factory - Package 2, **Oman**
- Border Post Facility, ROP, **Oman**
- OETC Substation, Muscat, **Oman**
- Shell Office Building, **Oman**



OMAN



- ROP DCDF Complex, Muscat, **Oman**
- MOD – Nojoor Sahalnoot Camp, **Oman**
- OETC & MEDC Substation, Muscat, **Oman**
- Sohar Floor Mill, Liwa, **Oman**
- OETC – Construction of Mahut & Duqm 400kV GIS Substation, **Oman**
- General Secretariat Building, **OMAN**
- Rotana – Tanmia H.O. & Hotel Apt Bldg., Muscat, **OMAN**
- Protestant Church Ghala, **Oman**
- Nujur & Sahulnut Camp, **Oman**
- Package-2 Frontier Camp, **Oman**
- Oman Cables Industry, **Oman**
- Oman Cables Aluminium Processing, **Oman**
- Office Building for MOD, Raysut, **Oman**
- Qurum Court Complex, Muscat, **Oman**
- ROP Rustaq Coast Guard, **Oman**
- Rustaq Substation, **Oman**
- Ooredoo Data Centre, Muscat, **OMAN**
- Royal Oman Police Commercial Building, Muscat, **OMAN**
- OIA HQ Buidling – Car Parking Area, Muscat, **OMAN**
- Ammunition Store – MOD, **Oman**
- Refurbishment of Al Khoula Hospital, **Muscat, OMAN**
- ROP – Border Post Facility – Dibba, **Oman**



OMAN



- NEMB MOD Non ID Area @ MAM Camp, **Oman**
- Power Water Authority (PAW), Muscat, **Oman**
- NEMB MOD ID Area @ MAM Camp, **Oman**
- PP Filler Plant & PVC Bulk Store Plant, **Oman**
- Oman Aluminium Processing Warehouse, **Oman**
- Taism School, Muscat, **Oman**
- ROP Border Post, Dibba, **Oman**



KUWAIT



- Abu Fataira Villas, **Kuwait**.
- Al Amiri Hospital, **Kuwait**.
- Public Authority of Applied Education, **Kuwait**.
- Al Sultan Private Farm, Wafra, **Kuwait**.
- Behman Residential Towers, **Kuwait**
- Kuwait International Airport, **Kuwait**.
- Police supermarket , Surra, **Kuwait**.
- Abdul Razzak al-Basir Secondary School, Rumaithiya, **Kuwait**.
- College of Science, Khaldiya, **Kuwait**.
- College of Girls, Kifan, **Kuwait**.
- Palestine Secondary School, **Kuwait**.
- Ishbiliya Secondary School, **Kuwait**.
- Sheikh Jaber Al Ahmad Al Sabah Causeway-Visitor Center, **Kuwait**.
- Al Mubarak City, **Kuwait**.
- ATC Warehouse, **Kuwait**
- .
- Sabhan Police Station – MOI, Mubarak Al Khabeer, **Kuwait**
- Office Building Kuwait Oil Company, **Kuwait**
- Caravan Works, **Kuwait**
- Hessah Mubarak Plot # 158 and 159, **Kuwait**



Kuwait International Airport, Kuwait



KINGDOM OF SAUDI ARABIA



- Ministry of Defence, **Saudi Arabia.**
- Lexus Car Showroom, **Saudi Arabia**
- Mitsubishi Elevators Office, **KSA.**
- Hilton Hotel, **KSA.**
- Al Bilad Bank HQ, **KSA.**
- Specialized Industrial Services Co. Ltd, **KSA.**
- Movenpick Hotel, Riyadh, **KSA.**
- Civil Defence Building, Madinah, **KSA.**
- Masjid Al Haram, Makkah, **KSA**
- Masjid Al Haram (Grand Mosque of Mecca), **KSA**
- Majma Tower Project Package 1 and Package 2, Al Majma, **KSA**
- Al Baddad Saudi-Camp, **KSA**
- Aquaculture Hatchery, BDO, **KSA**
- KSA Porto Cabin Lights, **KSA**
- Google Office, Jeddah, **KSA**



QATAR



- G+12+R Residential Building, **Qatar**.
- Aspire Academy, **Qatar**.
- Shooting Range & Training Complex, **Qatar**.
- The Gate Mall, **Qatar**.
- Pedestrian Crossing Bridge, **Qatar**.
- Al Baker Tower, **Qatar**.
- Development of Noufar, QAF, **Qatar**.
- Sawda Nathel Project, QAF, **Qatar**.
- LULU Hypermarket, Salwa, **Qatar**.
- Dukhan Bank, **Qatar**
- Qatafen Island, 4 Star Hotel, **Qatar**
- Office Building Doha Port, **Qatar**
- Doha Airport, **Qatar**
- Aman Hospital, **Qatar**
- Abdulla Villa, **Qatar**
- Qatar Central Bank, Westbay, Doha, **Qatar**
- Directorate of Public Works - Camp AS Sayliyah, **Qatar**
- HIA Bus Gates, Hammad International Airport, **Qatar**
- HIA Baggage Arrival Handling, Doha, **Qatar**
- HIA Office Area Lighting, **Qatar**



BAHRAIN



- Bahrain International circuit, **Bahrain.**
- Royal Navy, **Bahrain.**
- First Battalion Camp, **Bahrain.**
- Royal Court, **Bahrain.**
- Salmaniya Hospital, **Bahrain.**
- Nissan car showroom, **Bahrain.**
- Bahrain Defense Force, HQ, **Bahrain.**
- BDF Medical Training Center, **Bahrain.**
- Al Rawdha Palace, **Bahrain.**
- BDF Head Quarters, **Bahrain.**
- Building for Rockets and Mortar Guns, **Bahrain.**
- BDF Clinic, **Bahrain.**
- Mazda Car Showroom, **Bahrain.**
- Bahrain Institute of Public Administration, **Bahrain.**
- West Riffa School, **Bahrain.**
- Hamala Clinic, BDF, **Bahrain.**
- Al Saada Development, **Bahrain.**
- First Motors, **Bahrain.**
- Mall of Dilmunia, **Bahrain.**
- BDF Royal Medical Service College, **Bahrain.**
- Alba Social Center, **Bahrain.**
- Customs Office, **Bahrain.**
- Landmark Group BH Central Warehouse, **Bahrain.**
- Commercial Complex for BDF, **Bahrain**
- Royal Court – Wadi Ali Extension, **Bahrain**
- Bahrain Defense Force, Ahmed Falcon, **Bahrain**
- Tatweer Petroleum, **Bahrain**
- Hamad Falcon - Bahrain Defense Force, **Bahrain**



BAHRAIN



- Ministry of Education, **Bahrain**
- Hamad Falcon Non Critical Building Package 2, **Bahrain**



JORDAN



- World Health Organisation, **Jordan.**
- Arab Bank Head Quarters, **Jordan.**
- Al Maharat International School, **Jordan.**
- Jawhrat Shamasni Commercial complex, **Jordan.**
- Ayla Beach Club, **Jordan.**
- Amman Customs, **Jordan.**
- Clemenceau Medical Center, **Jordan.**
- Social Security Corporation building, **Jordan.**
- USAID – JESP School, **Jordan.**
- City Mall, Amman, **Jordan.**
- Synchrotron, **Jordan.**
- Khlouse for rolling & coating steel, **Jordan.**
- Ethihad Bank, **Jordan.**
- Pilot Projects for Energy Efficiency in Public Buildings, **Jordan.**
- Canary Factory, **Jordan.**
- The Surgical Hospital, Faculty of Veterinary Medicine – Jordan University of Science & technology, **Jordan**
- Fountain Mall, **Jordan.**
- Arab Potash Storage Facility, **Jordan.**
- Al Hikma Headquarter Building, **Jordan.**
- Arab Jordan Investment Bank, **Jordan.**
- Karak Officers Club, **Jordan.**
- Arab Potash Storage Facility, **Jordan**
- Arab Potash Admin Building, **Jordan**
- APC Main Building, **Jordan**
- Research, Development & Innovation Centre (RD&I) – Arab Potash, Al Mazar, **Jordan**
- Sofex – Exhibition Bldg., **Jordan**
- USAID School, **Jordan**
- HTU Technical Vocational Training & Education Campus, **Jordan**



OUTSIDE GCC



- Socotra Hospital, **Yemen**.
- Headquarters for Administrative Control Authority, **Egypt**.
- Maize Flour Factory, Angola, **Central Africa**
- 5 Star Merit Royal Hotel, **Cyprus**
- Project Green, Abu Hamad, **North Sudan**



Regional Projects

New Dubai Prosecution Building

Luceco and energy partner Multimission Technical Services has recently supplied LED luminaires for the new Dubai Prosecution Building, part of the Dubai Courts within the Municipality. The building was designed in a contemporary and distinctive architectural style overlooking the banks of the Dubai Creek and reflects the development taking place in the area.

The ground floor houses the waiting halls and investigation rooms with a further five floors containing executive departments and the Judicial Innovation Centre. Classified rooms, function areas and the customer experience centre were lit with LuxFrame luminaires providing a significant décor element as well as illumination to the architectural interior spaces. LuxFrame is a minimalist LED luminaire designed for suspended ceiling grid applications, installed around the ceiling tile maintaining the integrity of the ceiling, or can be suspended as a stylish pendant.

VIP offices and executive corridors were illuminated with linear arrays of Contour luminaires, optimised for efficient and uniformed glare controlled lighting. Contour can be suspended or recessed creating seamless runs of cost effective LED lighting with the added benefit of 100,000 hours maintenance free operational life. Platinum and Palladium downlights were used for circulation spaces and IP65 rated robust Climate weatherproof fittings were used in service rooms & car parking areas with Atlas bulkheads used for the amenity applications.





Regional Projects

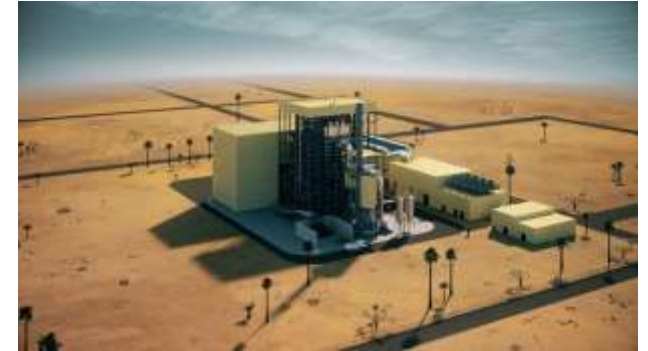
Emirates – Waste to Energy Sharjah, UAE

There are many hazardous areas in industry that require specific luminaires where the operation of lighting could pose a risk. Luceco offers a full range of LED luminaires approved for all ATEX and IEC Ex zone 1 and zone 2 hazardous area environments, including UL /CSA C1D2 installations. Designed for the most extreme environments, the range

includes Flood, Linear, Bulkhead, Bay and Crane luminaires, with emergency and industrial versions also available. The Sharjah Waste to Energy plant installed supplied a wide range of LED luminaires for the first waste to energy facility in the UAE.

ATEX luminaires throughout many hazardous areas including the boiler area platforms, tipping hall, turbine hall, processing areas, flue gas treatment area, air cooled condenser area and waste bunkers.

Masdar, in partnership with Bee'ah, the Middle East's leading and award-winning environmental management company, says the new plant will divert more than 300,000 tonnes of solid municipal waste from landfill each year greatly assisting with environmental goals for the Emirate. Cost effective, energy efficient lighting from Luceco will also help to meet this impressive facilities energy management strategy.





Regional Projects

Tough Vehicle Plant in RAK, UAE

Luceco and energy partner Multimission Technical Services has recently supplied LED luminaires to the Streit Group based in the Ras Al Khaimah Economic Zone in the UAE. Streit Group is one of the world's leading armoured vehicles manufacturers with 12 state-of-the-art production facilities and 25 offices worldwide. The already impressive plant will see seven additional dedicated new buildings housing robotic steel assembly, fabrication and laser cutting facility, extra production lines and finished product storage.

Luceco provided the lighting designs and technical advice to ensure the latest LED luminaire technology was employed to illuminate the entire project including office space, customer experience centre, showrooms, R&D suites, as well as the new production facilities.

Eris High Bays were used in the main plant areas, and Guardian Pro for external lighting, both at home in many industrial and commercial environments. Eris is a modern and slim IP65 rated luminaire with a die-cast aluminium body and polycarbonate lens optic for optimum performance. Guardian Pro is a commercial grade floodlight designed to replace HID fittings. Ranging from 50W to 245W, 6800 to 30,000 lumens achieving up to 136 Lm/cW, and offering asymmetric distribution for reduced glare, Guardian Pro features 'fit and tilt' brackets for simple installation with tilt adjustment locks.





Regional Projects

RTA Bus Station, Dubai UAE

The RTA (Road and Transport Authority) in Dubai has been working towards Expo 2020 and have put in place many enhancements to the already impressive public transportation system in Dubai. This includes the Dubai bus service network covering 87% of the urban area in the Emirate of Dubai. Luceco, along with Energy Partner Sentor Electrical, has become the preferred lighting manufacturer for several new RTA bus stations including Union RTA, Al Ghubaiba RTA, Al Kifaf RTA, Silicon Oasis RTA, Business Bay RTA and Al Quasis RTA Bus station.

Luceco has provided both interior and exterior lighting solutions for these new transportation hubs. Cost effective, energy efficient luminaires supplied included the Via Road Lantern for the internal road networks. Manufactured with vandal resistant die-cast aluminium housing, Via has post-top (60mm) or side-entry mounting and the option of car park or street optics.

Finally, stylish and contemporary Contour was installed in the extended height areas offering seamless runs of energy saving cost effective LED lighting. Available with interconnecting power and module connectors including corner connectors, T junction and cross pieces, Contour provides individual or continuous runs of illumination and 100,000 hours maintenance free operational life, a very attractive feature in buildings with a 24 / 7 lighting requirement.



Regional Projects

Arab Potash Storage Facility- Jordan

The Arab Potash Company is primarily involved in harvesting minerals from the Dead Sea and is the sole Arab producer and the eighth largest potash producer worldwide. Luceco in partnership with energy partner MEMCO Jordan designed a lighting solution to meet the challenging industrial environment. The luminaires supplied were specially customised with a marine grade finish to withstand the harsh conditions and included the Amnis Flood and Via Street Light from Kingfisher Lighting, part of the Luceco PLC Group, and the Eris HighBay and Guardian Pro Floodlights.

The Arab Potash Company pays great attention to the environment and has made sustainable development a slogan looking after the environment for future generations. The installation of cost effective LED lighting ensures their operations will be well lit as well as being energy efficient with the environment in mind.

The Amnis Pro is a robust luminaire engineered from precision die-cast aluminium and hosts an aerofoil heatsink system for enhanced performance. With improved lumen maintenance using MIRCO-Silver Reflector Technology, Amnis offers a high-performance, low glare output and outstanding efficiency with a luminaire efficacy of up to 133.3 lm/W and is capable of producing up to 105,000 luminaire lumens at 4000K with a CRI>70. Amnis is ideal for most high mast applications, is rated at IP66 and IK08 and offers 100,000 hours operational life.



LUCECO

Regional Projects



Arab Marine Academy – Khorfakkan

The Arab Academy for Science, Technology & Maritime Transport (AASTMT) at Khorfakkan in the Sharjah Emirate have installed energy saving luminaires from Luceco. The Academy is an affiliate of the Arab League in Egypt and specialises in marine transport science and technology, international shipping logistics and maritime law. In partnership with energy partner MLTC, Luceco provided an energy efficient lighting solution and supplied Carbon downlights, Eco LuxPanel, FType downlights, Atlas bulkheads and Climate luminaires throughout the facility.

The FType downlight family includes FType Fixed, FType Adjustable, FType Dim2Warm and FType Colour Change, all comprising of low glare crystalline lens and die-cast aluminum thermal rod heatsink, with speed and ease of installation guaranteed due to Clip & Fit and Speed Fit wiring. FType is also I-Joist certified in accordance with BS 476-21 for 30 minute I-Joist ceiling applications. Super-efficient Samsung LED chips deliver 100Llm/cW, with FType also offering leading and trailing edge dimming compatibility as standard.

Luceco has just launched the new FType Compact Fire Rated Downlight offering IP65 on fixed optics, and compliance to Air leakage Part C and acoustic Part E of the building regulations, as well as a 5 year warranty. Specifically designed for low ceiling voids, this latest addition to the FType family combines premium features with a versatile slimline construction. Insulation coverable and offering a range of colour temperatures, the new compact FType is available in 4W and 6W options with Flat, Regressed or Adjustable optics.



LUCECO

Regional Projects

EZ Wellness Centre – Ajman, UAE

Luceco has recently supplied an LED lighting solution to The EZ Wellness Centre at the Al Zorah Development, Ajman in the UAE. The centre aims to address well-being and healthcare issues and offers holistic treatments to chronic diseases, well-being therapies, life-changing programs and fitness. Five contemporary styled buildings, covering 8400 square meters, houses Massage and Treatment Rooms, Pool, Jacuzzi, Gym Turkish Hammam and Mud Bath. Other facilities on offer include a Separate Woman only Zone, Restaurant, Conference Rooms and Offices. The interior of this revolutionary health spa features a range of LED energy efficient lighting from Luceco including Platinum Mini, F Type and Carbon downlights, LuxPanel Eco Circular luminaires with further accent lighting provided by LuxBand LED strips.

The F-Type downlight family is renowned for the speed and ease of installation due to Clip & Fit and Speed Fit wiring technology. Likewise, the Platinum Mini has a unique swing tab design for quick and easy installation with the benefit of offering an efficacy up to 117 Llm/cW. LuxPanel Eco Circular features a slimline design suitable for recessed mounting in plasterboard or suspended ceiling systems, particularly where limited ceiling voids exist. The range has five sizes from 120 mm to 300 mm diameter and 6 to 24W in both fixed output and digital dimmable versions.

The EZ Wellness Centre is situated on the highest point of the 18-hole Nicklaus-Design Al Zorah Golf Club to enable views of the creek and the natural mangroves, reinforcing the importance of physical and mental well-being for a quality life, the LED lighting solution being an important element of the overall design.





Regional Projects

Abu Dhabi Future School Program

Luceco energy efficient lighting has been installed in two new schools in Abu Dhabi. The project involves the construction of two kindergartens located in Al Maqam and Zakher in Al Ain City which is part of Phase Eight of the Abu Dhabi Future School Program.

Numerous luminaires from Luceco were supplied including Lux Panel installed into ceiling grids, and downlighters including the Carbon and the F-Type. This popular compact downlight family includes F-Type Fixed, F-Type Adjustable, F-Type Dim2Warm and F-Type Colour Change, all comprising of low glare crystalline lens and die-cast aluminium thermal rod heatsink, with speed and ease of installation guaranteed due to Clip & Fit and Speed Fit wiring.

The buildings housed 18 classrooms for 720 students and included administration facilities, student's rest lobby, offices for teachers and multipurpose halls. IP65 rated Eco Climates and Atlas bulkheads were supplied to meet the external lighting requirement including play areas and parking bays.



LUCECO

Regional Projects

West Abdullah Al Mubarak City Project – Kuwait

Luceco LED technology features as part of \$800,000 refurbishment program in Kuwait

Luceco in partnership with local energy partner MSCO, Musaed Salem AL-Abduljader Co, Kuwait has been awarded an \$800,000 refurbishment programme to supply energy-efficient and cost-effective LED lighting to the West Abdullah Al Mubarak City Project in Kuwait. The brief included replacing all existing conventional fixtures with energy-efficient LED luminaires. Over 26,000 luminaires were supplied creating over 60% in energy savings on lighting the facilities. Luceco won the tender to supply both residential and public buildings within the development covering schools, public facilities including the mosque, ambulance centre, police station, health clinic, retail outlets, and government buildings.

A host of LED luminaires were involved within the refurbishment programme. Internally, many of Luceco's key luminaires were used including LuxPanels, Academy and a range of downlights such as the Platinum and Palladium. The Platinum range includes Platinum Mini and Platinum Surface as well as the popular high-performance Platinum used in many commercial and retail environments. Eris Highbay, Atlas Bulkhead, Sierra bulkhead, Fortis Wallpack, Guardian Pro floodlight and Slone post top luminaire were used for the other applications.

Project was managed by the Public Authority of Housing Welfare in Kuwait. Now the majority of both the public and residential buildings benefit from energy-efficient and cost-effective LED lighting from Luceco, all offering no maintenance or re-lamping requirements over the lifetime of the luminaire and being the ideal replacement for traditional fluorescent lamp fittings in residential, commercial and educational environments.



المؤسسة العامة للرعاية السكنية
Public Authority for Housing Welfare





Regional Projects - Kuwait International Airport

Luceco has recently relit the Departure & Arrival Gates, Immigration Counters and public areas at Kuwait International Airport, an established regional air hub in the Gulf. First Opened in 1982 as a refuelling point for British pales on their way to India, Kuwait International Airport has seen many refurbishment and additions to its infrastructure.

Luceco met the design brief which included energy efficient lighting with low maintenance that would provide the airport with cost savings whilst enhancing the passenger experience through more effective lighting. Supplied through Musaed Salem Al-Abduljader Co, Luceco delivered the LED lighting solution required with a quantity of over 6000 18W Carbon luminaires replacing 2 x 26W CFL Downlights.

Carbon Downlights are an ideal replacement for compact fluorescent downlights, offering running cost savings of more than 60%. Designed to retrofit ceiling cut outs of common compact fluorescent downlights, the Carbon is also supplied with interchangeable bezel options. With the project completed, CO² omissions have been reduced by over 9 tonnes annually and energy savings of 68% have been calculated with additional savings gained from not having to replace failed fluorescent lamps, providing a truly no maintenance, cost effective LED lighting solution for Kuwait International Airport.





Thank
you